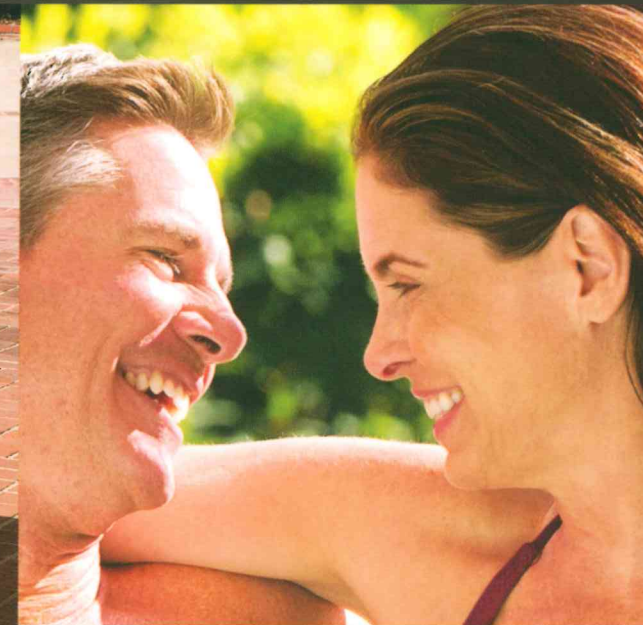




INTEX®



PureSpa™ Jet Massage

BY INTEX®

The Ultimate Spa Experience

The world's leading above ground pool manufacturer is bringing a new level of performance and relaxation to portable spas.

Intex's all new patent pending Fiber-Tech™ Construction is designed to provide the Ultimate Spa Experience.



#28421/28423: 12 Languages (110-120V)
 #28421E/28423E: English/Spanish (110-120V)
 #28422/28424: 12 Languages (220-240V)
 #28422EC/28424EC: English/French/Italian/Dutch (220-240V)
 #28422ED/28424ED: English/German/Spanish/Portuguese (220-240V)



#29001/E
 Filter Cartridge
 Twin Pack
 6 Ea., 3.9 lb (1.8kg)

SPECIFICATIONS

Item #	28421/E	28422/EC/ED	28423/E	28424/EC/ED
Seating Capacity	4	4	4	4
Water Capacity	210 gallons	795 liters	210 gallons	795 liters
Inner/Outer Diameter	58" / 75"	147cm/191cm	58" / 75"	147cm/191cm
Height	28"	71cm	28"	71cm
Gauge	33.6 ga	0.84mm	33.6 ga	0.84mm
Material	Laminate PVC	Laminate PVC	Laminate PVC	Laminate PVC
Internal Construction	48 Fiber-Tech™ beams	48 Fiber-Tech™ beams	48 Fiber-Tech™ beams	48 Fiber-Tech™ beams
Shipping Weight	133.8 lbs	60.4 kg	135.7 lbs	61.2 kg
Carton Dimensions	26 1/8" x 20 1/8" x 43 1/2" 68.3cm x 51.1cm x 110.5cm	26 1/8" x 20 1/8" x 43 1/2" 68.3cm x 51.1cm x 110.5cm	26 1/8" x 20 1/8" x 43 1/2" 68.3cm x 51.1cm x 110.5cm	26 1/8" x 20 1/8" x 43 1/2" 68.3cm x 51.1cm x 110.5cm
Carton Cube	13.62 ft³/0.385m³	13.62 ft³/0.385m³	13.62 ft³/0.385m³	13.62 ft³/0.385m³
Jet Pump	0.9HP/110-120V	650W/220-240V	0.9HP/110-120V	650W/220-240V
Heater	1,300W/110-120V	2,200W/220-240V	1,300W/110-120V	2,200W/220-240V
Filter Pump Flow Rate	500 gallons/hr	1,893 liters/hr	500 gallons/hr	1,893 liters/hr
Temperature Range	68° ~ 104°F	20° ~ 40° C	68° ~ 104°F	20° ~ 40° C
Temperature Rise	2° ~ 3°F/hr	1.5° ~ 2.5°C/hr	2° ~ 3°F/hr	1.5° ~ 2.5°C/hr
Jet Nozzles	4	4	4	4
Jet Pressure	7 ~ 10 psi	0.48 ~ 0.69 bar	7 ~ 10 psi	0.48 ~ 0.69 bar
Hard Water System	10W	10W	10W	10W
Saltwater System	—	—	30W	30W

PERFORMANCE

PureSpa™ Jet Massage series provides relaxation at the touch of a button. The easy-to-use control panel activates the high performance jets for a refreshing massage. The heating system adjusts to fit your personal temperature preference allowing a stress-free spa experience. PureSpa™ Jet Massage comes with either an electronic hard water treatment system or a combination electronic hard water treatment and saltwater sanitation system. The saltwater sanitation combo system gives the added benefit of spa water that is soft and gentle without harsh packaged chemicals. PureSpa™ provides simple maintenance with easy-to-replace filter cartridges for lasting enjoyment for up to 4 people.



Fiber-Tech™ Construction provides the ultimate comfort and support.

FEATURES



User-friendly interface and replaceable filter cartridge



4 high-powered massage jets for relaxation



Insulated cover and floor mat to minimize heat loss



Carry bag and grab handles for easy storage and transport



Floating chemical dispenser and test strips for easy maintenance



Built-in Hard Water Treatment System makes water gentler on skin, clothes and the entire spa system



Eco-friendly saltwater spa sanitizer naturally cleanses water (For #28423/E and #28424/EC/ED)

PureSpa™ Jet Massage with Fiber-Tech™ Construction

DESIGNED FOR COMFORT. ENGINEERED FOR DURABILITY.



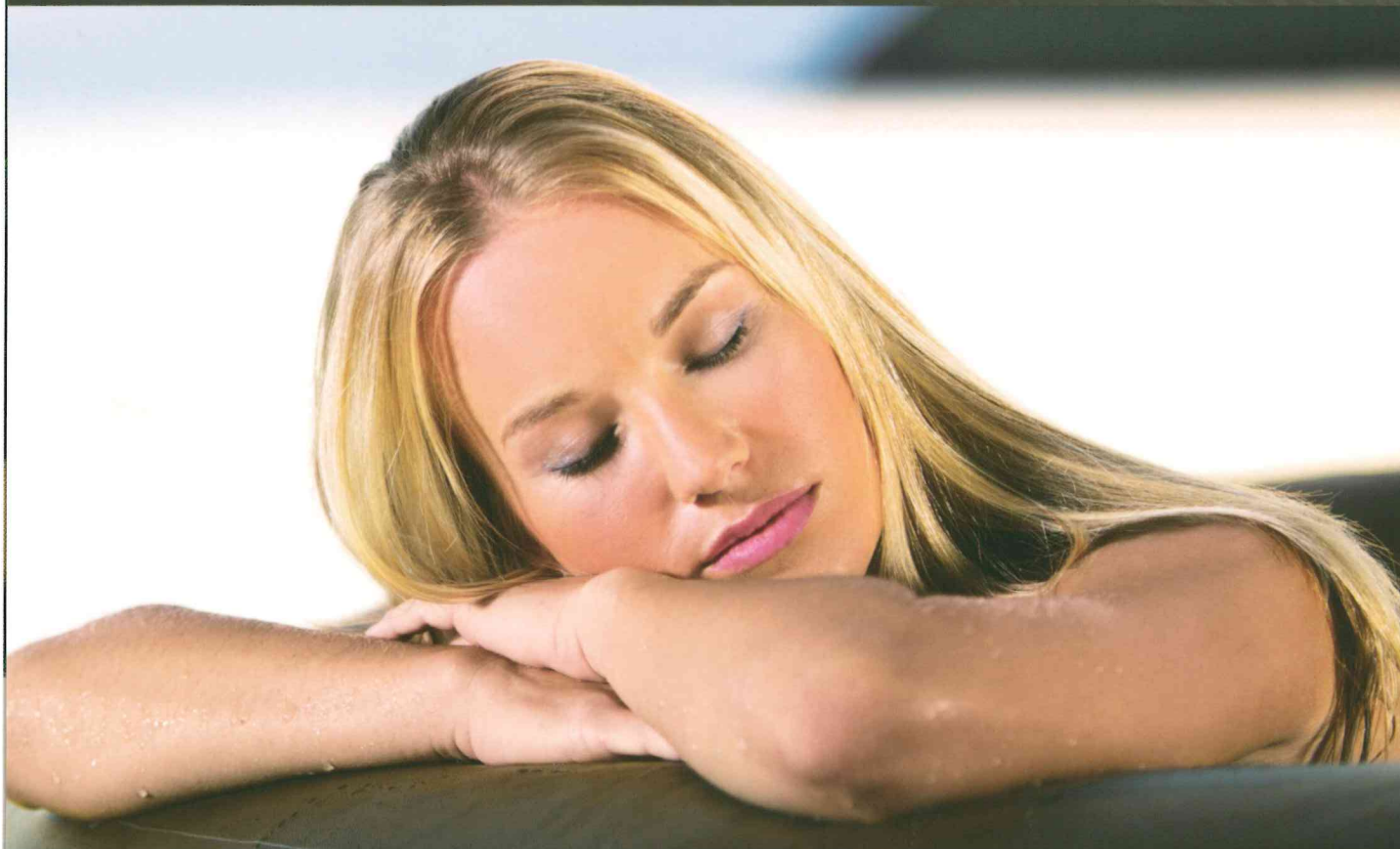
Thousands of high-strength fibers

Introducing Fiber-Tech™ Construction, designed to offer superior structural stability while maintaining a comfortable surface for a luxurious and refreshing spa experience.



Puncture-resistant 3-ply laminated material

Industry standard spa interior has been enhanced with lightweight, high-strength fibers for amazing durability and comfort.



INTERNATIONAL

Intex Development Co., Ltd.

9th Floor, Dah Sing Financial Centre,
108 Gloucester Road, Wanchai,
Hong Kong
Tel: (852) 2827-0000
Fax: (852) 2311-8200
E-mail: info@intexdevelopment.com
Web: www.intexdevelopment.com

USA

Intex Recreation Corp.

P.O. Box 1440
Long Beach, CA 90801-1440
USA
Tel: (310) 549-5400
Fax: (310) 513-6905
Web: www.intexcorp.com

EUROPE

Intex Trading B.V.

Venneveld 9,
4705 RR Roosendaal,
The Netherlands
Tel: (31) 165-593920
Fax: (31) 165-593969
E-mail: info@intexcorp.nl
Web: www.intexcorp.nl

Intex Trading s.r.o.

Benešovská 23
101 00 Praha 10
Czech Republic
Tel: (420) 267 312 645
Fax: (420) 267 312 552
E-mail: info@intexcorp.cz
Web: www.intexdevelopment.com

Unitex Service (France) S.A.S.

Z.A. de Milleure Bois du Ban – N°4
71480 LE MIROIR, France
Tel: (33) 385 75 64 64
Fax: (33) 385 75 64 65
E-mail: info@intexcorp.com.fr
Web: www.intex.fr

