

INTEX®



PureSpa™

BY INTEX®

The Ultimate Spa Experience

INTERNATIONAL

Intex Development Co., Ltd.
9th Floor, Dah Sing Financial Centre,
108 Gloucester Road, Wanchai,
Hong Kong
Tel: (852) 2827-0000
Fax: (852) 2311-8200
E-mail: info@intexdevelopment.com
Web: www.intexdevelopment.com

USA

Intex Recreation Corp.
P.O. Box 1440,
Long Beach, CA 90801-1440, USA
Tel: (310) 549-5400
Fax: (310) 513-6905
Web: www.intexcorp.com

EUROPE

Intex Trading B.V.
Venneveld 9,
4705 RR Roosendaal,
The Netherlands
Tel: (31) 165-593920
Fax: (31) 165-593969
E-mail: info@intexcorp.nl
Web: www.intexcorp.nl

Intex Trading s.r.o.
Benešovská 23
101 00 Praha 10
Czech Republic
Tel: (420) 267 312 645
Fax: (420) 267 312 552
E-mail: info@intexcorp.cz
Web: www.intexdevelopment.com

Unitex Service (France) S.A.S.
Z.A. de Milleure Bois du Ban – N°4
71480 LE MIROIR, France
Tel: (33) 385 75 64 64
Fax: (33) 385 75 64 65
E-mail: info@intexcorp.com.fr
Web: www.intex.fr

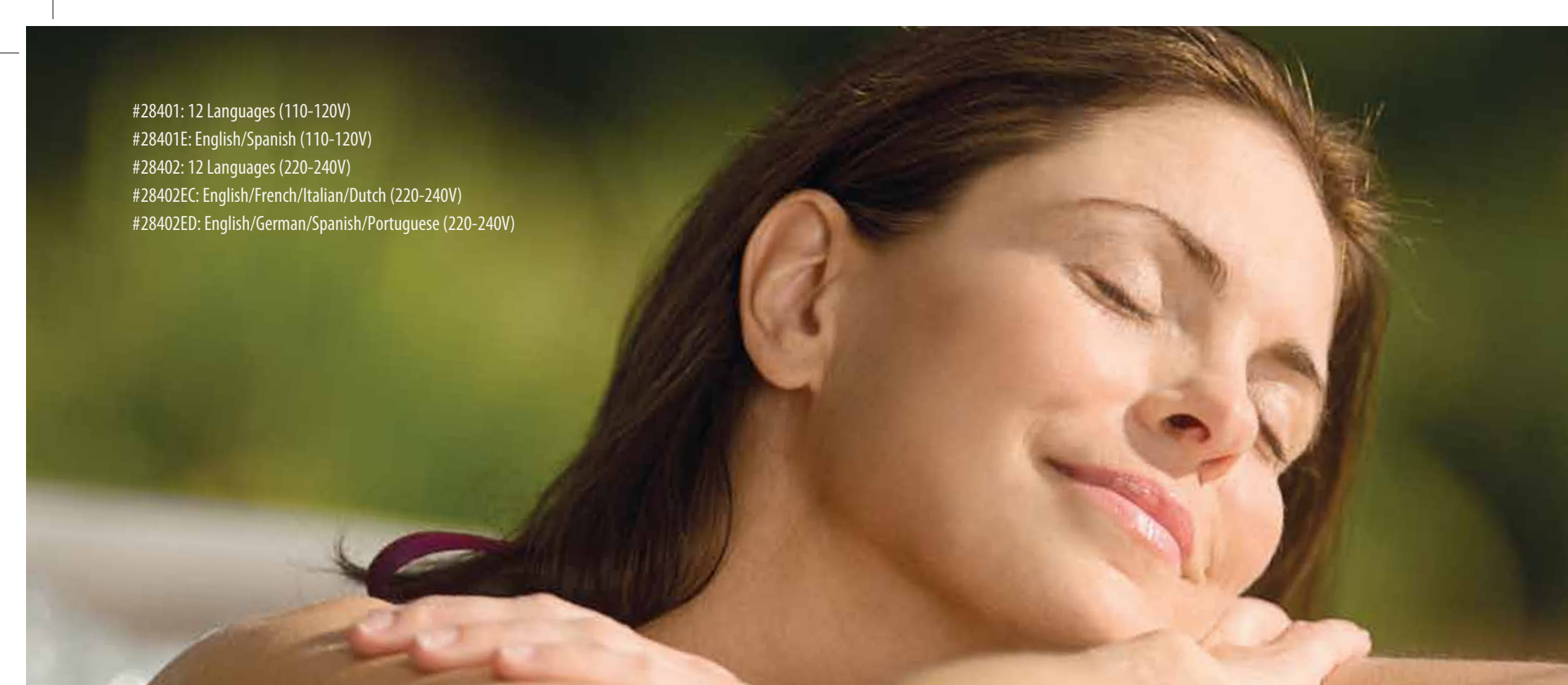


©2013 Intex Marketing Ltd. - Intex Development Co., Ltd. - Intex Trading Ltd. - Intex Recreation Corp. All rights reserved. Printed in China. *™ Trademarks used in some countries of the world under license from Intex Marketing Ltd. to Intex Trading Ltd., Intex Development Co., Ltd., G.P.O Box 28829, Hong Kong, and Intex Recreation Corp., P.O. Box 1440, Long Beach, CA 90801.

The world's leading above ground pool manufacturer is bringing a new level of performance and relaxation to portable spas.

Intex's all new patent pending Fiber-Tech™ Construction is designed to provide the Ultimate Spa Experience.

#28401: 12 Languages (110-120V)
 #28401E: English/Spanish (110-120V)
 #28402: 12 Languages (220-240V)
 #28402EC: English/French/Italian/Dutch (220-240V)
 #28402ED: English/German/Spanish/Portuguese (220-240V)



PERFORMANCE

PureSpa™ provides relaxation at the touch of a button. The easy-to-use control panel activates the high performance bubble jets surrounding the interior of the spa for a refreshing massage. The heating system adjusts to fit your personal temperature preference allowing a stress-free spa experience. PureSpa™ provides simple maintenance with easy-to-replace filter cartridges for lasting enjoyment for up to 4 people.



Fiber-Tech™ Construction provides the ultimate comfort and support.

SPECIFICATIONS

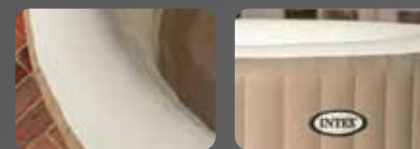
Item #	28401/E	28402/EC/ED
Seating Capacity	4	4
Water Capacity	210 gallons	795 liters
Inner/Outer Diameter	58"/75"	147cm/191cm
Height	28"	71cm
Gauge	33.6 ga	0.84mm
Material	Laminate PVC	Laminate PVC
Internal Construction	48 Fiber-Tech™ beams	48 Fiber-Tech™ beams
Shipping Weight	99 lbs	45 kg
Carton Dimensions	22¼" x 20" x 34¼" 56.5cm x 50.8cm x 87cm	31½" x 22¼" x 20½" 80cm x 56.5cm x 52cm
Carton Cube	8.82 ft³/0.250m³	8.30 ft³/0.235m³
Bubble Air Blower	650W/110-120V	0.9HP/220-240V
Heater	900W/110-120V	2200W/220-240V
Flow Rate	400 gallons/hr	1,514 liters/hr
Temperature Range	68° ~ 104°F	20° ~ 40°C
Temperature Rise	2° ~ 3°F/hr	1.5° ~ 2.5°C/hr
Bubble Jets	120	120



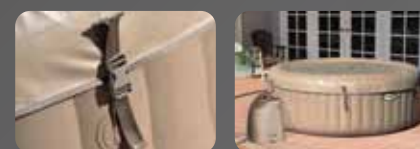
User-friendly interface and easy set-up



120 high-powered bubble jets for relaxation



Puncture-resistant 3-ply laminated material



Insulated cover to prevent heat loss

PureSpa™ with Fiber-Tech™ Construction



Thousands of high-strength fibers

DESIGNED FOR COMFORT. ENGINEERED FOR DURABILITY.

Introducing Fiber-Tech™ Construction, designed to offer superior structural stability while maintaining a comfortable surface for a luxurious and refreshing spa experience.



Industry standard spa interior has been enhanced with lightweight, high-strength fibers for amazing durability and comfort.